



**Ventico Australia Pty Ltd**

ABN: 53 077 155 376

PO Box 5084, Raymond Terrace East NSW 2324

10 McIntyre Road Tomago NSW 2322

Telephone: +61 2 4964 5900

Email: sales@ventico.com.au

## TECHNICAL INFORMATION

### BULLETIN/SAFETY ALERT

DOC NO: TBSA-25-05

<b>ITEM OF EQUIPMENT:</b>	<b>Ventico Trailer brake assembly 6-14T</b>
<b>VENTICO PART NUMBER:</b>	700210, 700737, 700735, 700588, 700425, 705373
<b>EARSA NUMBER:</b>	3638

#### Distribution:

**All who operate the Ventico trailer brake**, Applicable to: Ventico trailer brake 6-14T part number 700210, 700737, 700735, 700588, 700425, 705373

#### Purpose

To inform customers of a recommended mechanical upgrade to the 6–14T Ventico brake assembly. The original 12 Pin brake plate design has shown signs of stress under extreme load conditions. To enhance long-term reliability, the design has been revised to include 24 brake plate pins.

Note: There have been no reportable field failures directly linked to the original 12-pin configuration. This upgrade is a preventative improvement based on in-service wear analysis and field inspections.

#### Action:

- Customers are advised to return 6–14T brake assemblies to Ventico for this upgrade at their next scheduled rebuild interval.
- This work must be conducted at a Ventico certified facility, where factory jigs and tolerances ensure alignment accuracy.
- Units showing visible brake plate wear or pin distortion should be withdrawn from service and assessed immediately.

**Issue:**

**Description**

High-load trailer braking, particularly during decline haulage or emergency stop events, can result in localized stress and bending of the brake plate pins in 12-pin assemblies.

Ventico has developed a mechanical upgrade as a preventative measure to improve load distribution and brake durability:

- Drilling and machining of the middle and outer housings to install 12 additional brake plate pins (total of 24)
- Installation of redesigned brake plates to suit the new pin layout
- Factory assembly and QA inspection to ensure proper alignment and clearances

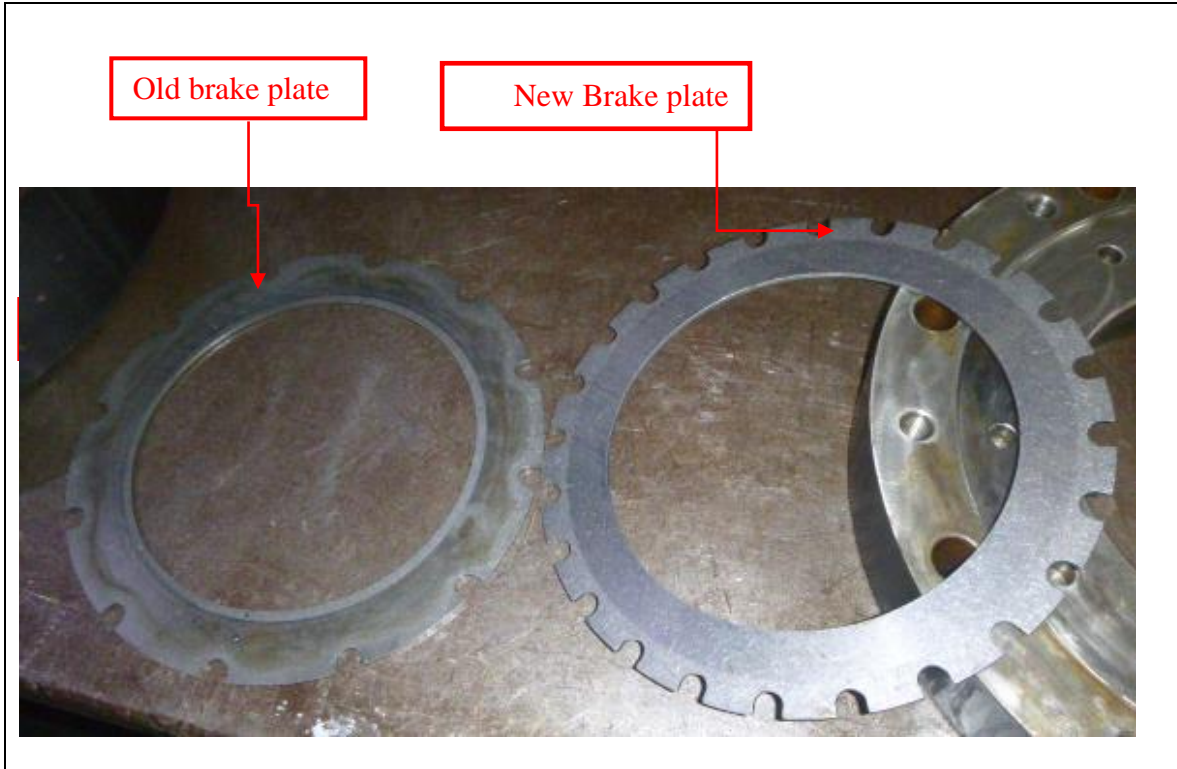
This upgrade offers increased mechanical strength and resilience in heavy-duty underground applications.

**Figures 1 & 2 – comparison of old and new designs**




Old Pin count


New Pin count



**PREPARED BY:**

Name:	Nigel Bray	Position:	Draftsman
Signature:		Date:	<u>16 / 06 / 2025</u>

**APPROVED BY:**

Name:	Guy Venticinque	Position:	General Manager
Signature:		Date:	<u>16 / 06 / 2025</u>